

It's A *mystery* (but not mysterious) ...

Part 3

Unit 3

3A

Remember, as you should *always press to C, also always press to A.*

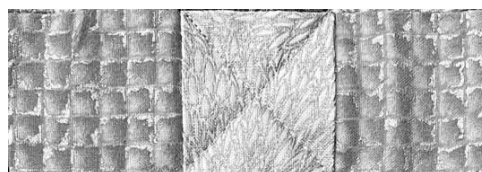
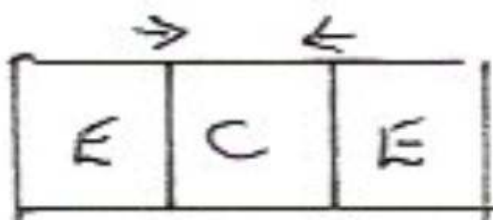
Also, a *"strip set"* equals 1 - WOF strip and 1 - 8" strip.

For this section you will need the following:

Fabric C: 1 strip set

Fabric E: 2 strip sets

Sew 2 strip sets of Fabric E and 1 strip set of Fabric C like this:

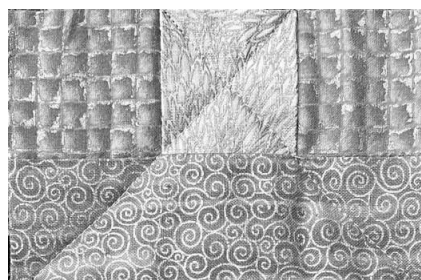
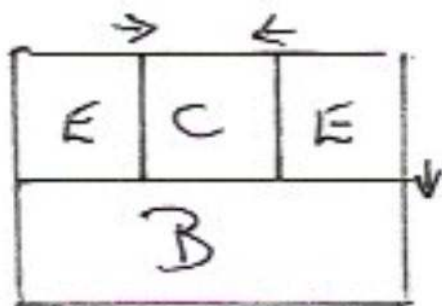


Cut into 2" segments.

You will have 24 Unit 3A.

3B

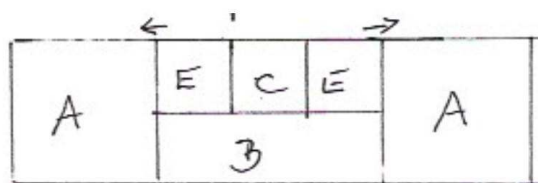
Fabric B: From your 3 - 2" strips, sub-cut into 24 - 2" x 5" pieces. Sew 1 - B piece to each Unit 3A to make:



3C

Fabric A: 24 ea. 3-1/2" squares

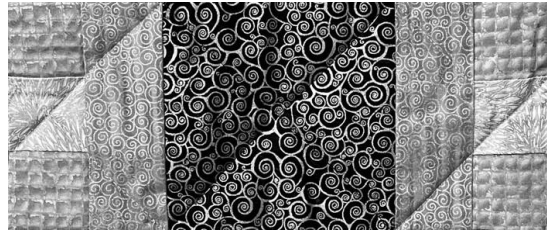
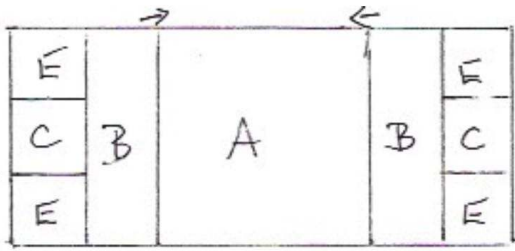
Sew 1 - 3-1/2" square Fabric A to each side of **12 Units** 3B.



3D

Fabric A: Cut 1 - 5" strip into 6 - 5" squares

Sew 1 Unit 3B to each side of Fabric A to make a total of 6 units.



Then assemble the rows/sections to form 6 squares:

Unit 3

When joining the 2 Units 3C and 1 Unit 3D, I found it easiest to press the seams open.

