



# STITCH 'N' TIMES

## Santa Rosa Quilt Guild

P.O. Box 9251, Santa Rosa, CA 95405

May/June 2025 • Vol. 49 • No. 3

## President's Message

### ***The Luther Burbank Quilt***

Recently, I had the opportunity to explore the Finley Community Center, a place filled with local artistry. Walking through the building, I noticed various displays that caught my eye, but one in particular piqued my curiosity. I found a quilt that tells a story of its own. It was dedicated to an important Santa Rosa historical figure, and I felt compelled to learn more about it.

Luther Burbank (March 7, 1849, to April 11, 1926) moved to Santa Rosa when he was 26. His goal in life was to improve and enhance various plants and crops through his experiments and research, and in his 55-year career he developed over 800 strains and varieties of plants. He became known as the "Wizard of Plants," the "Wizard of Horticulture," and the "Wizard of Agriculture." Are you sensing a pattern here?

The quilt at the Finley Community Center celebrates Luther Burbank, and each intricate block is a tribute to his horticultural legacy. So, the next stop of my research was our Guild Historian, Sharon Fry, who provided all the background information about the quilt.

The Luther Burbank Quilt was made in 1986 to commemorate SRQG's 10th anniversary. It was given to the Luther Burbank Home and Garden Center, where it was displayed for ten years until it was moved to the Finley Community Center. What I love so much about this quilt is that over thirty SRQG members contributed to it.



The committee included Vernice Thorn, who designed the overall layout, and Judy Markoff, who drew Luther Burbank's silhouette. Jeanette Hinton, worked with Vernice to choose the colors and flower designs. The architectural designs surrounding Burbank's profile include his residence, greenhouse, car-

riage house, and garden gate. Other blocks depict a few of his better-known horticultural creations, such as the Shasta Daisy, Santa Rosa Plum, and Russet Burbank Potato.

Guild members were asked to supply designs, fabrics, appliqué, embroidery, and hand quilting. New York Fabrics of Santa Rosa and Quilter's Quarters of Sebastopol donated fabric.

The Luther Burbank Quilt is part of SRQG's history as it is about Luther Burbank's history. It is also a testament to our guild's creativity and collaboration. Next time you're at the Finley Community Center, take a moment to admire this masterpiece!

***Linda Ralleca***

## 2026 Opportunity Quilt

Our new 2025 - 26 Opportunity Quilt, the *Bali Wedding Star* was revealed at the meeting on April 3. Made with a pattern created by Judy Niemier for Quiltworx, the pattern and strip set of fabrics were donated by Jan Nilsen. Bolt Fabric provided the background fabric. It was foundation paper-pieced by Elaine Ramires, and machine quilted by Rena Ferrero. The finished quilt is 80" X 80". The quilt will be displayed at most of our guild meetings unless it is featured at one of our wonderful fabric stores. It will also be taken to various northern California guild meetings and retreats and, of course, the Sonoma County Fair and the Cloverdale Citrus Fair. Raffle tickets can be purchased at Bolt Fabric in Cloverdale and Village Sewing Center in Santa Rosa, as well as during guild meetings. All members are encouraged to buy at least \$20 worth of tickets. They can be given as "thank you" gifts to friends and acquaintances OR you can keep them all for yourself! Buy more and increase your chances of winning. The drawing for the winner will be at our guild meeting on April 2, 2026.



***Rena Ferrero***

# May 2025 Program and Workshop

**Program – May 15, 2025, 10 a.m. - In-person,  
Zoom Recorded**

**Rhonda Denny: My favorite part of life -  
Embellishing**

Be excited, inspired, and willing to play outside the ordinary box.

Think about colors, natural elements, prefabricated, organic, and/or ordinary.

Every “pretty” audition may or may not make the cut.

Lay your ideas out and imagine what makes you happy. When you have a great combination, take a picture and this will help jog the memory.

Take your time, if it feels good keep going, if not stop or unsew.

I find that my pieces tell me what they want and when to stop.

Depending on the project, like my sparkly head band, I like big chunky pieces followed by filling them in with seed beads and such.

Have fun, when we are inspired, we are in spirit! - Rhonda

**Debbie Ward**



**Workshop - Rhonda Denny**

**My favorite part of life, Embellishing**

**May 16, 2025, LBAGC, 9 a.m.– 2:30 p.m.**

**\$20.00 (to cover rental) - 20 students**

Depending on the project, like my sparkly head band, I like big chunky pieces followed by filling them in with seed beads and such.

Use a tray with a towel (to keep items on the tray.) My favorite is a TV tray.

Utilize small boxes and tins to put your pretties in (such as jewelry boxes).

Sort your elements in a way that makes sense.

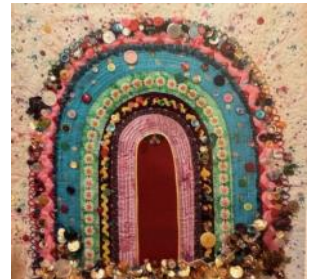
If beading is your thing, you will want beading needles (small eye, super thin needle).

Anyone interested in indulging in this rich endeavor is welcome to shop in my drawers as a gift, take what you want. I want all my people to have what the need to be a success.

**I will be providing a lot of materials. A tray, some small boxes or the like, a cloth to spill your beads upon. Beads, beads, and more beads, everyone will receive beads, and bobbles, trims, buttons, and jewelry. We can make eye candy. I will bring the foundation for a mini quilt slightly larger than a business card. Bring a quilt you might like to embellish, and we'll brainstorm together for bedazzling.**

Bring lunch and some yummy to share. Full kitchen access. Weather permitting, there is a lovely outdoor garden and a seating area for lunch. Please volunteer to help with set-up and clean-up. - Rhonda

**Debbie Ward**

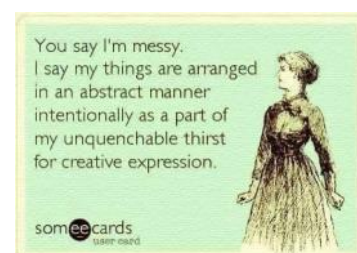


The winner of the 2024 - 25 Opportunity Quilt, the *Lucy Boston Quilt*, is Marianne Newman. Her name was selected from among MANY ticket stubs at our meeting on April 3. Marianne was very surprised and thrilled to have won! She has been a member since 2015. The *Lucy Boston Quilt* was very well received wherever we displayed it to sell raffle tickets. It was English paper-pieced, and hand sewn by Sue Gragg. Kathy Rathbun, Elizabeth McDonnell, Vivian Valencia, and Barbara Southard finished the top. Betty Upchurch machine quilted it beautifully. People were amazed by the colors, the paper piecing process and the overall beauty of the quilt. Congratulations Marianne!!!



**Rena Ferrero**

May/June 2025



# June 2025 Program and Workshop

## Program –

Thursday, June 19, 2025, 10 a.m. - 11 a.m. - on Zoom Only

### “The Beauty of the Imperfect”

Jenny Lyon

#### Bio:

I use my domestic sewing machine to create art quilts and wearable art. My work has been juried into a variety of major shows including Houston and Paducah, as well as art galleries, and SAQA (Studio Art Quilts Associates) exhibits. Some are held by private collectors. I have been joyfully teaching the art of free-motion quilting since 2006. My classes are encouraging, supportive, and light-hearted. I teach at various guilds, shops, and events throughout the country, as well as at major international shows. I call myself the Quilt Skipper because once while quilting my own quilt, I was so delighted by the unexpected beauty of it and what emerged from my needle, that I found myself cheerfully skipping around the house when I took my breaks. It is my joy to create art with free-motion quilting. I live in Northern California with my oh-so-patient hubby. Our two grown sons have left the nest to become men, leaving more room for books, fabric, and notions



#### Lecture:

The imperfect is beautiful! I'll show you inspiring and encouraging examples of my work, as well as the work of world-renowned quilters and artists that are beautiful in their imperfection, and I'll share my journey to imperfection.

**Debbie Ward**

## Volunteer!

We have opportunities everywhere, and it's a great way to make new friends, and help our guild!



## Workshop – with Jenny Lyon

Friday, June 20, 2025, 9 a.m. to 3 p.m. – on Zoom Only

### “Blooming Sheer”

**\$50.00 for SRQG Members**

**\$60.00 for Nonmembers**

This is just pure fun!

Let's play with squares of sheer fabric, layering them on a quilted background, to create colorful effects. This is color theory without color wheels or rules, just playing with color like a kindergarten!

This is a great class for a timid free-motion quilter and more experienced quilters can add quilted plants, insects, animals....

Have fun in a joyful class with a minimal supply list – does it get any better than that?

Kit can be purchased.

**Debbie Ward**



## 2025 Mystery Quilt

Hope you all are busy with cutting and sewing your Mystery Quilt from the clues we've given you so far.

As we can't post the instructions on our website, they are being sent to the membership via email.

The third clue will be emailed on May 1. The final clue will be emailed at the beginning of September.

We'd like to share our completed quilts (or quilt tops) at the first October meeting. We'll have a display board with examples of clues at each meeting, and if there are questions, we'll be there to (hopefully) answer them.

If you missed any of the clues, please email one of us and we'll be sure to get you up to date.

**Jean Chirhart**

**Rena Ferrero**





## Membership

Our membership is growing!

Ten new members have joined the guild since February, so please look for these ladies and make them welcome.

Randy Danto  
Pamela Gill  
Diane Herrera  
Jill Laird  
Maria Lane  
Maryanne Morehead  
Barbara Naslund  
Sall Wingard  
Debbie Valentine

As always, please check your listing in the Membership Roster and let us know if any changes need to be made. Updated rosters are always available by emailing

**Jan Andrews.**

## Sewing Room Sale

Mark your calendar for **June 5!**

We'll have eight tables full of sewing room supplies you have been looking for: items like lamps, fabrics, templates, rulers, magnifiers, batting, notions, embellishing items, beads, yarn, storage bins ... even furniture.



So bring your change, small bills, and a big bag to carry your treasures home so you can add them to your sewing room as you get ready for your next big project.

**Joy McGoran**

## REMEMBER ME ...



Valeska Lattin

## Treasurer's Report

### **A Quick Finance Commentary**

There are just a few financial issues we need to bring to your attention. These are regarding funds raised from the Opportunity Quilt, donations from eScrip Grocery Store donations, and the increase to the rent at the Vets Building.

First, let's start with a big hooray for the income received from the beautiful Opportunity Quilt that was raffled off on April 3. Our guild received a net total of \$3,234.00 from ticket sales. Thank you to those of you who supported our guild by buying tickets, and especially to Rena Ferrero and the crew who saw to it that this quilt was taken to various locations so that we could sell more tickets.

Second, let's check in regarding the eScrip donations that we receive from local grocery stores: Oliver's Market, Petaluma Market, Molsberry Market, and Sonoma/Glen Ellen Village Market. Last year in 2024 we received a total amount of \$665.72. Not too shabby for just shopping local and supporting the local businesses. But, this year, we have already received a total of \$380.99 and that is only for 3 months! Don't forget to sign up at these markets, and it is very easy to do so. Every time you shop at these markets, they make a 3% donation to our guild. The sign-up forms are on our website, on the Forms and Resources page, near the bottom, and listed as [eScrip Grocery Store Forms](#). Often our membership table will have some printed forms for you to pick up at a meeting. Such an easy-peasy way to do double duty by supporting local business and our beloved SRQG.

Last year we were given notice that the rent at the Vets Building was going to be increased by a sizeable amount. We were fortunate that this did not go into effect at the first of the year as expected, even though it had been discussed, and the increased amount was worked into our budget and approved by the members. Now we have been informed that the increase in rent will go into effect starting in July of 2025. But the good news is that it is not going to be quite the original increase we had expected. Currently we pay \$55.00 an hour for our meeting room, and it will go up to \$61.00 an hour in July. The kitchen rental fee is currently \$30.00, and this will go up to \$35.00 an hour.

Overall, as the Treasurer, I consider this all-positive news. I encourage you to continue to support our guild so we can have a fun-filled and creative future. Keep on quilting!

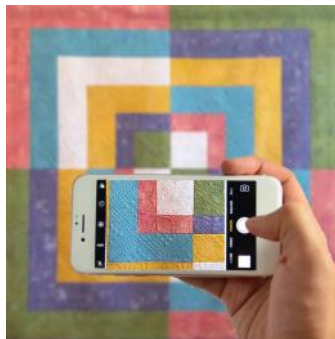
**Diana Coddling**

# Digital Recording Policy

## Taking Photos and Videos at Guild Events

During the February General Meeting, the guidelines for taking photos and videos at Guild events were reviewed. These guidelines are designed to ensure meetings run smoothly, minimize disruptions, and respect the comfort and privacy of our members.

- During meetings, only the Photography, Videography, Zoom, and Social Media Teams are authorized to digitally record proceedings, including Show-and-Tell segments. Members are encouraged to take photos before or after the meeting, or during designated breaks.



This approach allows the Guild Photographer to capture moments without interference, reduces disruptions, and ensures an unobstructed experience for attendees during the meeting.

- During Program Meetings and Workshops, members are expected to respect any presenter who requests "no photos." Members should seek permission before taking photos if the Program Chair does not announce the presenter's preference.
- Photography for personal use is allowed, provided the presenter or any meeting attendee has not requested to be excluded.
- Always obtain permission before taking close-up photos of individuals' faces or capturing images that include minors.
- When sharing a photograph of a quilt on social media, always strive to credit the quilter unless they have expressed a preference for anonymity.

Questions regarding these guidelines can be directed to any Board Member.

**Linda Ralleca**

# Friendship Blocks

Who'd like to create their own quilt with blocks made by their friends?

That's what Friendship Blocks are all about.

You get one credit for making a block for a friend's quilt, and when you get three credits you can contact me and let me know what kind of blocks you would like to request your friends to make for you (and how many) so you can make your own quilt.

If you're wondering how many credits you have; you can check online.

We're just wrapping up "Elaine Tucker's iSpy blocks" (to make a community quilt) and are currently working on Easter themed blocks for Sharon Fry.

Please sign up even though these are going past the deadline as we still have eight spaces to fill for these blocks. If you've signed up to make blocks, PLEASE turn them in before the deadline so your friend can make and display seasonally themed quilts in a timely manner.

**Lisa Gamble**



## Sew-a-Rows



## Member-Sponsored Sew Day

Always a fun get-together, there are some changes to the upcoming **June 12, 2025**, Sew Day. Formerly known as the *Susan Silvey Sew Day*, that original donation by Susan has been depleted. An anonymous angel has stepped up and donated money for this event to continue.



The SRQG Board has renamed the June event as *Member Sponsored Sew Day*. The estimated cost of Veterans Building rental and refreshments is \$500, and the Board is encouraging anyone else who would like to underwrite future Sew Days (either anonymously or in your name) to donate through our website at

[PreservingQuiltingHeritage - Fundraiser by Santa Rosa Quilt Guild on spotfund](#)

When donating on our website, please put in comments that donation is for *Member Sponsored Sew Days*, or you can contact our Treasurer, Diana Codding, to make a donation.

New for 2025, the event will take place as follows:

Veterans Building rental will be from 9:30 a.m. - 2:30 p.m. Sewing will be from 10 a.m. - 2 p.m., with a half hour set up before hand and a half hour clean up afterwards. SRQG will supply drinks and dessert, but members are asked to bring their own brown bag lunch.

If you want to join the fun, please sign up at a guild meeting, or email Elaine Ramires directly.

**Elaine Ramires**

## Sew-a-Row

This year's Sew-a-Row program already is full of impressive work! All 31 Sew-a-Rows have been turned in with Row 2 completed, and quite a few went right back out again!

It is so exciting to see each Sew-a-Row starter begin to turn into a quilt. The website has the most recent pictures, and they are beautiful!

(Pictures of some of the Sew-a-Rows can be seen on pages 5 and 12 in this newsletter.)

Sew-a-Rows will be available at our sew days, the Quiltathon, and each in-person meeting. Please come by and adopt one. You'll be glad you did!

**Eileen McAlister**

## May Block-of-the-Month

The May 2025 block is "Eccentric Star." This block goes together quickly using 5" squares to make Half-Square Triangles. If you have some charm squares in your stash, you can easily put together several in no time. Make sure you follow the color recommendations outlined in the instructions.



Sew as many blocks as you would like and submit them to be entered into the drawing. Each block you enter gives you an entry into the drawing. The drawing for the May 2025 blocks will be at our July 3, 2025 meeting.

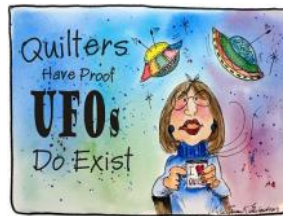
Watch for the email each month notifying you when the instructions have been posted to the website. The directions for all the BOMs are posted on the guild website at:

[Block of the Month at the Santa Rosa Quilt Guild](#)

**Karin Wesner**

## UFO Challenge

Are you having trouble deciding on which UFO project you would like to return to making and/or finishing? I am.



I rummaged through my closet and managed to pull out three appliqué projects (I know there are one or two more in there). Each of these need borders and hand quilting. So, my decision is to decide which one to finish by next September.

At the first meeting in March, we asked members to tell us about the UFO project they plan to take up again, and whether they will partially complete or finish it by September. Some members even work on more than one! (Gasp) Each member pays \$5.00 per project they are entering. In September, the finished UFOs will be displayed, and entry fees returned if they have met their goal(s), along with a fat quarter of fabric and chocolate.

Join us!

**Elizabeth McDonnell**



# Little Bits with Jackie Pitts

## ***Somebody Loves Your Ugly***

When a member of our guild known for her beautiful workmanship spoke those words, my mind went at once to a recent gathering of quilters on Zoom. The quilters were of different nations and levels of skill and experience as the richest environments for learning generally are. We had just heard a rather technical discussion on the walking foot, and how to keep your needle from falling out while using one. The next to speak was a Canadian lady who showed us, I think, her first quilt. Her eyes were wide with astonishment at what she had just heard. Whatever she had got out of the previous conversation, she was clearly impressed, but also intimidated. Her quilt was a small one. It was composed of squares alternating fussy cut pictures of Minnie Mouse on a white background and red with white polka dots. This quilt was for her three-year-old granddaughter who loves Minnie Mouse. This lady had every reason to be pleased with her handwork. This is the perfect quilt for a three-year-old who loves Minnie Mouse. When the quilt has become a memory and the little girl a grandmother, she will smile and know that she was loved and will be a better grandmother because of it. What can any quilt do that is better than that?

Some quilts are destined to go to quilt shows and museums, but most are for somebody's bed. My elder son, when a toddler, had a quilt composed of 18" squares of brightly colored pencils and crayons. The beloved newly discovered world of a little child. He dragged that quilt everywhere with him. One day he dragged it to the floor heater and left it there. By the time this was discovered the heater had scorched a hole in the quilt. Fortunately the hole was in a block on the last row. I simply cut off the last row, zig-zagged the raw edge, and returned the quilt to active service. It was shorter, but he still loved it. A certain wonkiness is one of the marks of the hand of man.

It was Eli Whitney who first taught us to expect a standardized product. Make the best (rifle) you know how. Take it apart. Make a mold for each part. Make a whole lot of each part. Stand in a long line and pass the (rifle) down it with each person putting on a part. This is an assembly line. We practice something like it when we finish our Community Quilts. This useful method is why you don't necessarily need to buy a new car or sewing machine every time a part breaks or wears out. It is an efficient way of putting things together, but some things such as a quilt top need more personal attention. This does not need to be highly technical, just personal. If you

## **Little Bits continued**

don't know a walking foot from a running shoe you can still make a beautiful, memorable, and entirely satisfactory quilt.

First: you don't have to begin by memorizing a book on color theory. When I was preparing a nursery for my second baby, someone told me that my color choice was incorrect. "Science says that you should paint it white," she said. How and where did "Science" make this declaration? Some researcher somewhere had discovered that children respond well to cheerful colors, and she regarded white as a cheerful color. There is no incorrect color for a quilt. You have a favorite color. If you are in doubt about this, look down. What are you wearing? Look in your closet. What do you often choose? There is no incorrect answer to "What is your favorite color?" - not for you, and not for the person for whom you are making a quilt. If you don't know that person's favorite color, ask. The answer may surprise you. I have known a person whose favorite color from the age of four was gray. If the person is too young to answer, you just pick something washable in a color you like to use. If the recipient asks for a wild color combination, perhaps for a dorm room, and you fear that the colors will disturb or prevent sleep, there is a way of making all colors restful. Turn off the light!

There is a pile of fabric in front of you. The colors look pretty good to you. Now what? Check to see that you have some variation in size and visual texture of print or contrast in some form. Light and dark? Now throw in a few bits of something that isn't the dominant color. Try a couple of different colors and one will spark. I have a lavender quilt with every possible shade of purple and a few bits of yellow and lime green. These make the quilt. Quilts need contrast of some sort. In a barbecue place back east, I saw a memorable quilt on the wall with plenty of contrast but only one fabric. That fabric was wide wale corduroy salvaged from work clothes in a rich gold color set in odd shapes with the nap going every possible way. The beauty was that of a topographical map. It was a true piece of folk art in a place decorated with folk art. It reminded me of the quilt my husband slept under when a boy on his aunt's sleep porch. His quilt was made of denim salvaged from family jeans. All shades of blue. All directions. Very heavy, but warm. The love of his family in a concrete form helping an asthmatic child grow into a man free of asthma.

A long time ago, I want to say in the early 1970s, WOMAN'S DAY offered a quilt idea. It involved using bandannas, red and blue, uncut and pieced together

**Little Bits continued ➔**

**Little Bits continued page 8 ➔**

## Little Bits continued

for the quilt top. I liked the idea so I made one. I bought bandanna material by the yard in red and blue from Woolworths in San Francisco, and sewed the bandanas together in a sort of hopscotch design with a thin batting and a light blue flannel backing. I think I turned it as we have done our Community Quilts. Then I quilted it roughly following the bandanna designs, on the same home sewing machine on which I made many of my own clothes and clothes for my children and other household things. Nobody had mentioned to me that you needed a lot of specialized equipment to make a quilt. I kept the part I wasn't working on rolled up tight. We enjoyed that quilt for years and years. Once, I remember, the little girl across the street fell asleep on our sofa playing with paper dolls. My dear husband carried her home to her mother without waking her, wrapped in that quilt. It was a good "everyday life" quilt.

But don't you have to match a lot of corners to make a "good quilt"? Not necessarily. There is, for example, the whole cloth quilt. When my second child was born, many decades ago, we did not know whether to expect a he or a she. I opted to make the oncoming baby a quilt from an allover print of the illustrations from Kate Greenaway's "A APPLE PIE." When we took our child in his little Moses basket to the Public Library, it seemed especially appropriate to take him wrapped in a book. (He grew up to be an avid reader.) Then there are panels. Some of them come labeled "quilt panel" and some don't. For my firstborn, I made a crib quilt with the center panel of a Dutch kitchen towel. It was linen with a Dutch village of blocks. I added a wide border of sunny yellow kettle cloth, a backing of light green flannel, and put the quilt together by the turn method. It did very well. There are maps of the world and of the United States on fabric, and doll houses and other wonderful things that would make great quilts and wouldn't call for great technical expertise. Most of us perhaps keep a quilt in the back of the car in case of unannounced picnics or sleepy kids. Ours came in very handy the time our car suddenly became inoperative on a cold night. How about this: the family is planning a road trip. The back seat quilt contains a map of the United States. The kids add a button to every state they visit or add a tiny drawing in the approximate location of every cousin's house. Lots of fun and secretly moderately educational. No matching corners needed. Just a map panel and borders.

There are two more very traditional quilt methods, both of which involve no matching of corners and lend themselves to quilting-as-you-go, in strips, on a home sewing machine. Betty Upchurch demonstrates this quilting method on our guild website.

Little Bits continued page 9➔

## Quilt Guild Challenge



### ***Santa Rosa Quilt Guild Challenge Quilt for 2025***

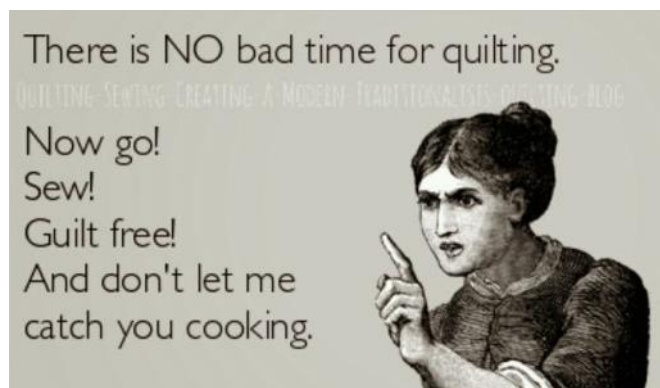
We have been invited again to display our quilts at the Person's Senior Wing of the Finley Community Center in January 2026. To acknowledge that, we will center our 2025 Challenge Quilt around celebrating aging. The challenge will be to design a quilt around the well-known poem "Warning" by Jenny Joseph. You are probably more familiar with the first words of the poem, "When I am an old woman, I shall wear purple...". We challenge you to design a quilt based on the poem, using the attitude of her words such as rebel, cheeky, or outrageous as your inspiration.

To create the most dramatic display, the color palette (purples of course) and the size of the quilts will be the same to bring unity to the presentation.

The size of the quilts will be 30" square, and the colors will be 80% of the quilt in challenge colors and 20% whatever you choose. The due date is July 3, 2025. I can't wait to see what we come up with!

Have fun!

***Toni Anderson***





## Little Bits continued

One is "Chinese Coins" which, though very old, has a curiously modern feel depending on your choice of fabric. This design is especially apt when you want to showcase a tiny bit of some fabric, perhaps an heirloom.



Chinese Coins

The other highly traditional method is brickwork. It goes like this: all the patches are the same size and shape. The finished size is twice as wide as it is long; let's say 1" x 2". So with seam allowance cut 1-1/2" x 2-1/2". OK so far? NOW every other row of bricks begins and ends with a half brick. (Cut 1-1/2" x 1-3/4" because of the seam allowance.)



Brickwork

When you join these rows together be sure that every other row begins and ends with a half brick. That way you don't have to match any corners. And I want to see your quilt. I'll bet it will be a beauty.

**Jackie Pitts**

## Let's stick together ...

Elmer's Washable School Glue is vastly popular with quilters. This can be in liquid form or glue stick; they both work well for a variety of techniques. Specific quilting and sewing glues can be purchased in local quilt stores and online. Adhesive sprays are another type of glue that can be used for quilting, and many like to baste their quilts with spray rather than pins.



Wondering how you can use glue in your quilting and sewing? Here are few of the many ways:

- Binding - most quilters appear to have either a love or hate relationship with binding. Glue can make this process a bit easier for both hand and machine binders. Need a tutorial? Sharon Schamber has a series of video tutorials on binding a quilt with glue that is extremely popular. Both machine and hand binders will find her techniques helpful.
- Precision piecing - seams of all types can benefit from a bit of glue. When liquid glue is applied to the seam allowance, seams can be matched in a nearly perfect manner before they are sewn together. This prevents all shifting. If you are

**Let's Stick Together continued →**

## Sunshine

The Sunshine Team sends cards to our members who may need a smile to brighten their day. The reason could be illness, family concerns, or someone who just needs to know they are being thought of within our guild. There are different ways to bring names to my attention: email, phone call, text (my contact information is on the membership list), or just come up to me at one of our in-person meetings.



And...if you would like one of your favorite quilts to be used as a Sunshine card, here is your chance.

Send me a .jpg of your quilt – actual size. My stationery cards hold a 4" x 6" photo. Your name will be noted on the card each time your quilt photo is used.

Here is one way to bring a bit of joy to our members. I look forward to hearing from you.

**Janice Juul**



## Let's Stick Together continued

having trouble with complex blocks, glue can help keep those seams neat and precise

- Hemming - quickly hem clothing by gluing fabric in place rather than pinning.
- Appliqué - a touch of glue makes appliquéing nice and easy. When appliques are glued to the background fabric, there is little or no shifting during the sewing process. An added benefit? No pins to sew around!
- Basting - do you like to spray baste your quilts? Adhesive spray can be rather costly. Check out [Glue Basting 101: How to Use School Glue to Baste a Quilt of ANY Size](#) on how to baste an entire quilt with Elmer's Glue!
- English paper piecing - rather than using a needle and thread, fine-point glue pens can be used to hold the fabric in place for English paper piecing. Read more about it in [English Paper Piecing Tutorial - The Sue Daley Sewline Glue Pen Method](#).

Are you ready to give glue a try? Keep these helpful tips in mind!

**Let's Stick Together continued on page 10→**



# PET PROJECTS



## Let's Read Outside

Imagine being four-years-old and going to Bayer farm where quilts are hung in the garden. You will hear stories in English and Spanish, have brunch made from the vegetables in the garden, take home free books and other goodies from the Sonoma County Library, and possibly win a quilt to take home. This happens every week during the summer where 20 quilts are given away to lucky pre-school and elementary age students.

*Let's Read Outside* is sponsored by Landpath, a local non-profit dedicated to getting people outside and into nature. Bayer Farm is a collaborative of small gardens in the Roseland neighborhood. Many activities and classes that support the community happen under the direction of Jonathan Bravo at Bayer Farm. *Let's Read Outside* is only one such activity.

The Santa Rosa Quilt Guild, through Community Quilts, provides 20 quilts each May to support the summer program. This year the quilts were so colorful and child-oriented. Please see the picture of one of the beautiful quilts with Marlene Vera, a children's librarian from the Roseland Library. The crew at Bayer Farm is so appreciative of our efforts, and all agree that the quilts are beautiful. A heartfelt thank you to all the members of the guild who have made quilts to support this program over the years. If you would like to visit Bayer Farm, please let me know. They welcome us with open arms anytime. They have a calendar of outdoor events and classes online at [Bayer Farm](#) in Santa Rosa. Most activities are free and open to everyone.

**Debbie Faris-Cole**



Debbie Faris-Cole and  
Marlene Vera

## Heart Pillows

An Invitation to make **Breast Cancer Heart Pillows:**

How would you like to help bring a bit of comfort to a patient going through Breast Cancer Surgery?



Our Heart Pillow volunteers make and distribute Heart Pillows for the Kaiser Breast Cancer Care team right here in Santa Rosa.

I would be so happy to have a few members join me in this *very low key, zero stress, and highly rewarding* task.

All it takes is two pre-washed cotton 15-1/2" fabric squares. I will supply the pattern. All you will need to do is cut out the fabric, sew it together, and turn it right side out. Maybe add a touch of the iron. I will take care of the pillow stuffing and closure.

If this sounds interesting to you, please contact me - - Janice Juul -- I'm on the membership list. I will be happy to email you with the patterns and instructions or you can pick them up from me at an in-person meeting.

Please let me know if you are interested and I'll take care of the rest.

**Janice Juul**

## Let's Stick Together continued from page 9➔

- When using Elmer's washable glue, set the glue with a hot dry iron before sewing. Just a couple seconds of pressing dries the glue and prepares it for sewing.
- Many quilters claim that the glue does not "gunk up" their sewing needles. If you are worried that this may be an issue, be sure to carefully apply the glue in the seam allowance only. A little bit of glue goes a long way!
- Dots of glue spread, so lines are not always necessary.
- Always be sure that the glue you are using is washable.

[Quilting Digest](#)



# PET PROJECTS



## Finley Center

### **New Sewing and Quilting Classes at Finley Community Center**

The staff and visitors to the Person Senior Wing of the Finley Community Center have enjoyed seeing our Challenge Quilts displayed by Laura Barrett and Janet Tonkin. A request was made for sewing and quilting classes at Finley, and with the help of Jeanne Pugh, Recreation Coordinator for the City of Santa Rosa, the Santa Rosa Quilt Guild will be able to provide a series of classes between September and February. Finley Community Center posts a bi-yearly Activity Guide and works six months in advance to plan their classes.

We are planning sessions in each of the following months, September, October, January, and February. Each session will last four weeks. The classes will be taught by SRQG volunteers, and materials will come from donations to the Guild, so the classes will be offered at an affordable cost of \$40.00 per four-week session to cover the rent of the room only. The series of classes will cover beginning sewing and quilting, machine piecing, basting, quilting, and binding. Our focus will be on having students experience the complete quilting process. The classes will most likely be on Tuesday evenings from 5:00 p.m. – 7:00 p.m. There will be a main teacher to lead the group, and four or five assistants to help students individually. The classroom at Finley will accommodate from ten to twenty participants.

We have from now until the end of summer to plan the classes and prepare the materials and supplies we need. This summer, we need members who would be willing to develop lessons and prepare handouts, sort fabric, cut out material for quilts, prepare sewing tool kits, and plan for the maintenance of the machines we have. In the fall, we need members who would like to teach classes, assist students, or manage materials. We have an abundance of supplies and fabric, as well as sewing machines that are available to us. If you would like to be involved in this work, in a small way or in a big way, please let me know.

**Finley Center continued ➔**

## Rincon Valley Library

The *Rincon Valley Sewing Circle* is back in full swing with our “Beginning Sewing Series” and as ever, we, the teachers, are having a great time with our students. Sadly, due to space limitations, we had to limit participation to new students only, and we miss our “grads.” Some of our students are true “newbies” to sewing, and we continue to be amazed at how quickly they pick up the skills they need to make a project.



Jane Wanjiku



Megan Fonseca  
Jane Wanjiku

Thanks to donations, we have an ample supply of fabric and notions to teach these classes, for which we are very grateful. Some of our projects require larger amounts of fabric (tote bags and table runners), and we can always use donations of “blender” fabrics to go with our stash of focus fabrics, so if you have any half-yard or larger pieces of blenders that you can’t use, send them our way.

If you happen to be near Rincon Valley Library between 1 p.m. and 3 p.m. on Mondays through April 17, drop by and say hello.

**Vicki David**

### **Finley Center continued**

A big shout out to Lynette Whitman who donated a brand-new sewing machine, and to Janet Chosa who donated two working sewing machines to the guild for this purpose. Also, I am always reminded of, and grateful for all the generous donations of fabric, supplies, and machines donated over the last several years from each of you.

**Debbie Faris-Cole**



## Technique Sharing Workshops (TSW)

Hello Santa Rosa Quilt Guild, here are some updates:

- June 5, Thursday: Sue Stone, Vets Bldg. After the meeting, **Portable Ironing Board**.
- June 12, Thursday: Rhonda Denny, **Kitchen Witch** patterns provided at the Member Supported Sew Day Vets Bldg.
- July 3, Thursday: Vicki David, **Traditional Binding Method** Vets Bldg. After the meeting.
- July 11, Friday Janet Tonkin, at Luther Burbank Art and Garden Center (LBAGC). Super-sized -- Please reserve your space by signing up. Janet will demonstrate how to use the **Accuquilt Fabric Cutter and Dies**. This TSW costs \$20 to go toward the rental of the LBAGC. There are 20 spaces available. Start time is 9 a.m. for set-up -- 2:30 p.m. clean-up so we are out of the building by 3:00 p.m. Homework: SRQG.org Library category at the bottom of the page, use the GO prompt to look for the die cutters that make you happy. Give your list to Janet.
- August 8, Friday: Genelle Voorhees, at LBAGC **Coiled Basket**. Super-sized TSW. More information to follow ASAP. Please reserve your space.
- September 4, Thursday: Rhonda Denny, Vets Bldg. After the meeting, **Kitchen Witch**.

Things to think about: Please sign up on the sign-up sheets near the TSW trifold. There are two types of TSWs. The after-the-meeting gatherings are free, but we do need to have a head count for things such as how many patterns to bring, etc.

Super-sized TSWs are held at the Luther Burbank Art and Garden Center (LBAGC), 2050 Yulupa Ave. We pay to rent the room which is generally, around \$20 per person. Sometimes there is a kit fee, if kits are provided. If you have any questions or concerns, please call, text, or email us. We are in the guild directory.

Thank you,

**Rhonda Denny**  
**Chris Rogers**



Sew-a-Row

## A Bit of Poetry ...

*Quilts*  
for Sally Sellers

*Like a fading piece of cloth I am a failure  
No longer do I cover tables filled with food and laughter  
My seams are frayed my hems falling my strength no longer able  
To hold the hot and cold  
I wish for those first days  
When just woven I could keep water  
From seeping through  
Repelled stains with the tightness of my weave  
Dazzled the sunlight with my  
Reflection  
I grow old though pleased with my memories  
The tasks I can no longer complete  
Are balanced by the love of the tasks gone past  
I offer no apology only this plea:  
When I am frayed and strained and drizzle at the end  
Please someone cut a square and put me in a quilt  
That I might keep some child warm  
And some old person with no one else to talk to  
Will hear my whispers  
And cuddle*

**Nikki Giovanni**



Nikki Giovanni

Born in 1943, Nikki Giovanni is the author of numerous collections of poetry and was the first recipient of the Rosa Parks Woman of Courage Award.

Source URL: [Quilts by Nikki Giovanni - Poems | Academy of American Poets](https://www.srqq.org/Quilts%20by%20Nikki%20Giovanni%20-%20Poems%20Academy%20of%20American%20Poets)

# Community Quilts

## Quiltathon: May 1

We hope you are ready to join in the fun at our second Quiltathon of the year, on Thursday, May 1, at the Veterans Building. The Quiltathon is an active event in which we work together to make quilts that will be donated to the Community.

We start with layered quilt sandwiches, smoothing and pinning them. These are stitched around the edges leaving an opening for turning (known as the pillow case or envelope method). The quilts are then trimmed and turned right side out. The next stage is edge stitching with our expert sewers sewing 1/8" from the edge, catching the opening, and making a nice edge to the quilt. The quilts are then quilted by machine. Then our hand sewers put on one of our labels. Lastly, the quilts are reviewed by our 'quality control' team making sure no pins or needles are left in a quilt, trimming threads, and removing excess lint and threads with lint rollers. As you can see, there is a job for everyone. One of the favorite aspects of the Quiltathon is the opportunity to visit with our long-time friends and to make new friends. As a thank you for our efforts, our hospitality team will serve a pizza lunch.

The doors open at 9:30 a.m. We have a short business meeting at 10 a.m., then the fun begins! Our greatest need is for members to bring their sewing machines. We look forward to sharing a productive and friendly day together sharing our talents with our local community.

## Sharing the Appreciation for our Quilts

We want you to know that the quilts we send out to the Community are greatly appreciated. While delivering quilts to the NICU (neonatal intensive care unit) of one of the local hospitals; the nurse delivered this message: "You make a lot of people happy! These quilts will be loved and appreciated. Please tell everyone who makes them 'Thank You.' " We also received a thank you note in the mail from the NICU at another of our local hospitals. Here is what the nurses had to say: "We love all the beautiful quilts! They add a bit of warmth and joy to our unit and patients." "Some of the cutest and most beautiful quilts. And the families can bring them home." "The quilts mean so much to our families!"

Thank you to everyone in the guild for your creativity, generosity, and continued support in making tops and finished quilts for all the groups we donate to during the year.

## Just so you know:

We have batting and backing available to all members for quilts you make for Community Quilts. Contact Janet Tonkin or Laura Barrett and we will arrange pick up of batting and/or backing.

You can bring in finished quilts and tops to all in-person meetings. Look for the red wagon with the Community Quilts sign. Thank you for your dedication and beautiful work in making and donating quilts for the comfort and support of those in our local Community.

**Janet Tonkin**

**Laura Barrett**



## COMMUNITY QUILT SIZES

If you are making donation quilts on your own, these are the approximate sizes most needed.

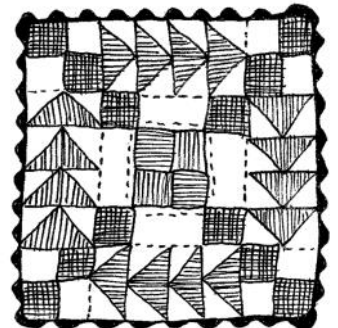
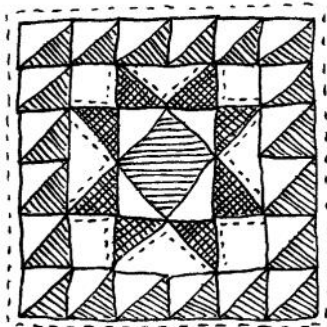
32" x 40" Baby Quilts	For Sutter, Kaiser, and Memorial NICUs, Public Health nursing, and teen moms. We provide kits for making the tops, or you may use your own fabrics.
40" x 60"	For Valley of the Moon and other organizations serving children in need. Please use bright colors for young children or fabrics that will appeal to teenagers.
50" x 65"	For 18-year-olds aging out of the Foster Care system, and for women residing at the YWCA Safe House.
40" x 60"	Lap quilts for adults to be handed out by Secret Santa, women being served by Verity, seniors in local convalescent hospitals, and others.
14" - 18" Square Doll Quilts	For little girls and boys. We collect them throughout the year and donate during the holidays.



## QUILT SHOWS TO ENTER (and VISIT)

Name	Location	Dates	Quilt Submission Deadline
<a href="#">Quilts by the Bay</a> , Monterey Peninsula Quilters Guild	Chautauqua Hall, Pacific Grove, CA	May 2 - 4	
<a href="#">Quilts In Bloom</a> , Grapevine Quilters Guild	Ukiah, CA	May 3 - 4	April 5
<a href="#">Mountain Magic Quilt Show</a> , Sierra Moun- tain Quilters Assoc.	Oakhurst Community Center, 39800 Rd 425B Oakhurst, CA	May 17 - 18	
<a href="#">7<sup>th</sup> Artichoke Festival Quilt Challenge</a>	Monterey County Sheriff's Posse Grounds 395 Old Natividad Rd, Salinas	Jun 14 - 15	June 6
<a href="#">California State Fair</a>	1600 Exposition Blvd Sacramento, CA 95815	Jul 11 - 27	May 15
<a href="#">Sisters Annual Quilt Show</a>	Sisters, OR	Jul 12	NA
<a href="#">International Quilt Festival</a>	George R Brown Conv Center Houston, TX	Oct 9 -12 Classes start Oct 6	To be announced

*If there's an event you'd like Guild Members to know about, please submit it to Linda Ralleca.*





# 2025 Elected Board and Team Chairs

## 2025 ELECTED BOARD

President	Linda Ralleca
Vice President	Eileen McAlister
Treasurer	Diana Coddling
Secretary	Debbie Faris-Cole
Program Chair	Debbie Ward
Program Chair Elect	Chris Rogers
Parliamentarian	Elaine Ramires
Members-at-Large	Laura Barrett
	Rhonda Denny
	Rena Ferrero
	Mary Ann Hayre
	Karen Hendrix
	Diane Hoxeng

## 2025 TEAM CHAIRS

Audits	Eileen McAlister
Awards	Sharon Fry
Block-of-the-Month	Karin Wesner
Boutique	Betty Upchurch
Budget	Diana Coddling
Challenge Quilt	Toni Anderson
Community Quilts	Laura Barrett
Corresponding Secretary	Janice Juul
Crafts Fair	Gale Davis
Email Coordinator	Sharon Fry

Fair Liaison - Santa Rosa  
 Fair Liaison - Cloverdale  
 Fifth Thursday Sew Day  
 Friendship Blocks  
 Historian  
 Hospitality  
 Library  
 Membership  
 Mystery Quilt  
 Newsletter Editor  
 Nominating  
 Opportunity Quilt Ticket Sales  
 Opportunity Quilt Design  
 Proofreader  
 Retreat  
 Sew-a-Row  
 Sewing Room Sale  
 Social Media  
 Sunshine  
 Technique Sharing Workshop  
 Twenty Year Members  
 UFO Challenge  
 Videographer  
 Website  
 Welcoming Team  
 Zoom Team

Gina Stateler-Calhoun  
 Norma Viglienzzone  
 Elaine Ramires  
 Lisa Gamble  
 Sharon Fry  
 Carolle LeMonnier  
 Sharon Fry  
 Jan Andrews  
 Jean Chirhart  
 Jim Jensen  
 Elaine Ramires  
 Rena Ferrero  
 Elaine Ramires  
 Sharon Fry  
 Vicki David  
 Eileen McAlister  
 Joy McGoran  
 Linda Ralleca  
 Janice Juul  
 Rhonda Denny  
 Laura Barrett  
 Elizabeth McDonnell  
 Linda Hooper  
 Linda Hooper  
 Rhonda Denny  
 Elaine Ramires

# SRQG 2025 Calendar

## MAY

- 1** General Meeting - *In-Person, Zoom Recorded*  
Quiltathon
- 15** Program - *In-Person, Zoom*  
Rhonda Denny -  
"How to Embellish your Quilts"
- 16** Workshop - *LBAGC*  
Rhonda Denny - "Embellishment"
- 22** Board Meeting - *Zoom Only*
- 29** NO Fifth Thursday Sew Day



## JUNE

- 5** General Meeting - *In-Person, Zoom*  
Award Nominations Due  
Sew-a-Row: Row 3 due  
Sewing Room Sale  
TSW - Portable Ironing Board
- 12** Member Supported Sew Day - *In-Person*  
Kitchen Witch Project
- 19** Program - *Zoom Only*  
Jenny Lyon - "The Beauty of the Imperfect"
- 20** Workshop- *Zoom Only*  
Jenny Lyon - "Blooming Sheer"
- 26** Board Meeting - *Zoom Only*

# Santa Rosa Quilt Guild Affiliates

## BOLT FABRIC AND HOME

Kate Barrett  
219 N. Cloverdale Blvd.  
Cloverdale 95425  
894-2658

Tues. - Sat. 10:00 - 6:00  
Sunday 11:00 - 4:00

[Bolt Fabric](#)  
[info@boltcloverdale.com](mailto:info@boltcloverdale.com)

10% discount for SRQG members

## CLOVERDALE QUILTING

Margaret Davids, Owner  
111 Lake St.  
Cloverdale, CA 95425  
415-577-8407

[Cloverdale Quilting](#)  
[cloverdalequilting@gmail.com](mailto:cloverdalequilting@gmail.com)

Hours by Appointment

## BAY QUILTS

Sally Davey and Abbey Shane Lawrence  
5327 Jacuzzi St., #3C  
Richmond, CA 94804  
(510) 558-0218

[Bay Quilts](#)  
[create@sfbayquilts.com](mailto:create@sfbayquilts.com)

## FOGBELT QUILTING COMPANY

Megan Schofield  
4991 Newanga Ave.  
Santa Rosa, CA 95405  
707-738-2364

Hours on demand  
[www.fogbeltquilting.com](http://www.fogbeltquilting.com)  
[megan@fogbeltquilting.com](mailto:megan@fogbeltquilting.com)



## Recipe for Iced Coffee:

1. Make coffee



2. Start sewing

3. Forget you made the coffee

4. Add ice to cold coffee