

Luther Burbank Art and Garden Center, 2050 Yulupa, Santa Rosa  
Friday, March 16 set-up 8:30am, class 9:00am to 3:30pm

## “Outside the Box” Class Supply List

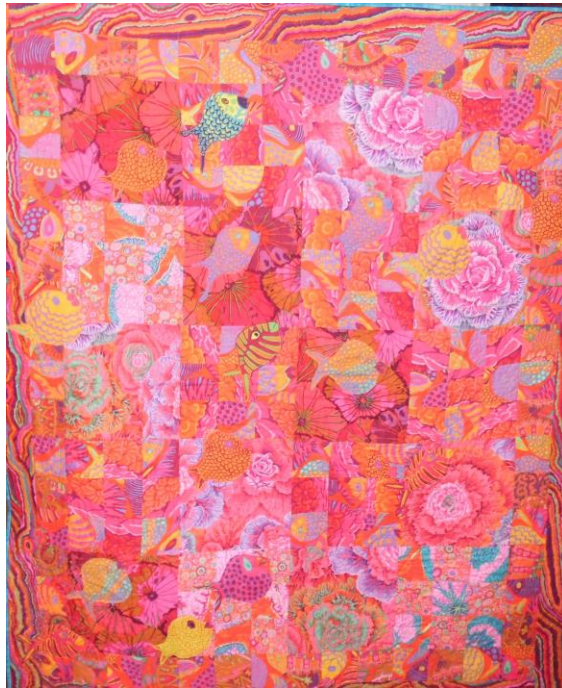
Michelle Peerson

This is a class where you will be making a traditional quilt featuring a large print fabric which will be used within the quilt and fussy cut and raw edge applied on the top. The quilt is also monochromatic, which means mostly one color or color wave. The amount of fabric you need depends on the finished size you want your quilt. The following suggestions are for a lap quilt or wall hanging approximately 44” x 56”.

3 yards of large print focus fabric

3-4 yards of colored fabrics in the the same colors that appear in your focus fabric. The key is to try to maintain the same value (lightness or darkness).

Your quilt will be more interesting if you include fabrics with various size prints. Solids are often are too strong.



Note: I love Kaffe Fassett fabrics, they are great for this project and come in various color waves.

These directions may seem frustrating to some, which is good as they are in the process enhancing their individual creativity. This is not just a technique, I will guide you through “getting outside your box” during the class. Please call me if you have any questions.

Michelle Peerson 916.367.1264

Workshop coordinator: Rhonda Denny 542-8013 [rhoholou@sbcglobal.net](mailto:rhoholou@sbcglobal.net)