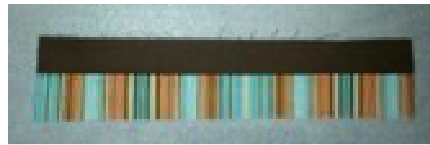


# Machine Sewn Binding with Accent Strip

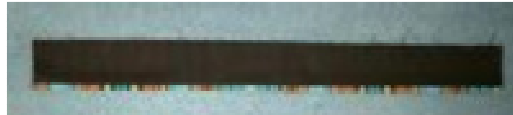
Cut  $1\frac{3}{8}$ " strips from the outside binding fabric. Sew end to end for desired length of binding plus 10". Press seams open.

Cut  $1\frac{3}{4}$ " \* strips from the accent fabric the same length as outside binding. Sew end to end, again press seams open.

Sew these two strips together lengthwise, right sides together with a  $\frac{1}{4}$ " seam. Press the seam towards the narrower strip.



Press the strip in half lengthwise, wrong sides together, as usual for a binding. You should notice that you suddenly have an accent strip on one side!



To attach the binding, sew the binding to the **BACK** of the quilt first. The outside of the binding, the side with the small accent strip, is laid down against the back of the quilt. Use a walking foot, miter the corners and attach the two ends as usual. (I find it easier to attach the ends with a straight seam) Press the binding away from the quilt (just the sides, not the corners). This will make it easier to sew to the other side.

Turn the quilt to the front, and bring the binding around to the front. There is now a seam line where the two fabrics were originally sewn together, forming the accent strip. Stitch in the ditch at this seam, and fold the corners to miter them. Match your top thread to the accent strip and your bobbin thread to the quilt backing. The binding is complete.

Accent fabric  $1\frac{7}{8}$ " =  $\frac{1}{4}$ " flange

$1\frac{3}{4}$ " =  $\frac{3}{16}$ " flange

$1\frac{5}{8}$ " =  $\frac{1}{8}$ " flange

