



# Stitch 'n Times

Santa Rosa Quilt Guild  
P.O. Box 9251, Santa Rosa, CA 95405  
October, 2014 • Vol. 38 • No. 9

## President's Message

If you were fortunate enough to attend our Founders Day Luncheon last month, you will be aware that our Librarian, Sharon Fry, was giving the history of Founders' Day and mentioned that our guild was 301 members strong. Our Membership chair people corrected that figure to 299 members. Sharon made the statement that perhaps we would have 301 members by the end of the meeting.....well, guess what? We did! We had two new ladies join this incredible group of talented quilters.

When you are a part of this guild, you are a part of a collective body of knowledge and experience that can only enrich your life. You can gain inspiration from our library of over three thousand books, but you can also gain inspiration from our incredible Show and Tell, our Block of the Month, our Friendship Block program, or from the shy quilter sitting at a table working very quietly on a work of art.

When you a part of this guild you are part of a community of people who willingly share their wealth of information about quilting and are happy to do so. Thank you to all of you who give and share so much.

Vicki David

## November Program and Workshop

**ALETHEA BALLARD**

**PROGRAM THURSDAY, NOVEMBER 20, 2014 ~ "TRUNK SHOW"**

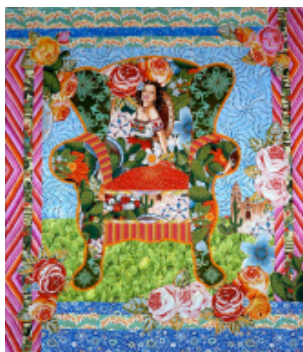
**WORKSHOP FRIDAY, NOVEMBER 21, 2014 ~ "CHAIR OF YOUR DREAMS"**


Alethea Ballard is an artist, author and quilter. She gets her inspirations from a quirky palette of fabrics that she buys wherever she goes. Her quilts' colors and designs are influenced by Van Gogh and other post-impressionist artists. She creates vibrant and exciting quilts, using clear colors and cheerful images. She **MUST HAVE** the largest scale florals and the most interesting conversation prints! Her quick, exuberant working style is a reflective of her impatience with convention, her spontaneity, and her artistic sensibility.



Alethea has written *Dream Chair Quilts: 7 Patterns for Whimsical Wallhangings*, and the upcoming *Maverick Quilts*, both from C & T Publishing. Alethea's amazing quilts are inspiring a new generation of quilters.

Inspired by the cozy comfort of your favorite spot to relax, a wonderful appliqué chair quilt is the perfect way to showcase exciting fabric. Make a chair to hang wherever you want a dream chair, from the library to the boudoir. Alethea Ballard, quilter and author of *Maverick Quilts*, *Using Large-scale Fabrics*, *Novelty Prints & Panels with Panache* and *Dream Chair Quilts: 7 Patterns for Whimsical Wallhangings*, teaches her no-fuss style of appliqué in a fun workshop class. Of course, traditional methods can also be used. Special attention is given during the class to using fabrics in innovative and unusual ways. Let your imagination run wild in this freeing class - bet you can't make just one chair!



 Joanie Bellinghausen  
& Genelle Voorhees

## Community Quilts

### QUILTATHON!

Our last Quiltathon of the year will be Thursday, October 2nd from 9:15 am to 3 pm at our usual meeting place. At 10 am we will break for a brief business meeting, library report, and show-and-tell. Then we'll continue to work and visit.

We will have quilts ready to pin, machine sew, trim & turn, iron, machine quilt, and label. Experienced guild members will be on hand to help any who need instruction.

We will set up tables for pinning (basting) quilts and will supply the pins. Other tables will be set up for trimming quilts before they are turned. If you'd like to sew around the edges of quilts or work on quilting, bring your machine with a walking or free-motion foot. If you plan to hand sew labels, please bring your own scissors, needles, and thimble.

Come join the fun!

### OCTOBER 30th FIFTH THURSDAY RETREAT

9 am – 3 pm at Luther Burbank Art & Garden Center, 2050 Yulupa Avenue (south of Hoen Ave.) This will be a relaxed day. You may work on your own projects and/or donation quilts. Bring your lunch if you'd like and enjoy visiting with other members. Come and go as you please. Community Quilts is getting ready for year-end giving and will have quilts in various phases of completion ready for you to work on.

If you'd like to quilt, bring your machine with a walking foot or free-motion foot. Hand-sewers please bring your favorite scissors, needles, and thimble.

### QUILTS NEEDED


If you are working on donation quilts at home this fall, we have a need for:

50" x 65" quilts to be given to 18-year-old men and women aging out of the Foster Care system. We especially need more that will appeal to young men.

40" x 60" quilts in fabrics that will appeal to boys.

32" x 40" Baby Quilts.

Many thanks to all who participate in the Community Quilts project.

 Pam Beebe & Anne Dondero



October 2014

## Nominating Committee

Hopefully, everyone will be pleased to know that at the September 25 Board Meeting, this committee presented to the Board for their review our recommended slate of nominations for next year's Executive Board as required in the Bylaws. We will be announcing the slate of nominees to the membership during the first general meeting in October, and the Election will be held on Thursday, November 6. During the November meeting prior to the election, additional nominations may be made from the floor if desired.



Jenine Giblin

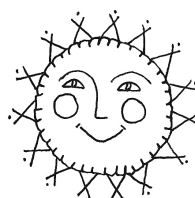
## COMMUNITY QUILT SIZES

If you are making donation quilts on your own, these are the approximate sizes most needed:

32" x 40" Baby Quilts	For Sutter & Memorial NICUs, Public Health nursing, & teen moms. We provide kits for making the tops, or you may use your own fabrics.
40" x 60"	For Valley of the Moon and other organizations serving children in need. Please use bright colors for young children or fabrics that will appeal to teenagers.
50" x 65"	For 18 year olds aging out of the Foster Care system.
40" x 60"	Lap quilts for adults. Given to Secret Santa, deserving seniors in local convalescent hospitals, & others.
Doll Quilts	For little girls & boys. We collect them throughout the year and donate during the holidays.

Thank you to all who are involved with this important outreach project!

## Sunshine



Knowing that someone cares can really make a person's day brighter. Please contact me by phone or email if you know someone who could use a card from the SRQG.

Happy Sewing,  
Jan Westerman (Ms. Sunshine)



[www.srqg.org](http://www.srqg.org)

# HAPPY HALLOWEEN!

## Awards

At our Founders' Day celebration, the third Thursday of September each year, we are given the chance to thank and honor people who have put a lot of extra effort into helping to make our Guild function even more smoothly. The President appoints an Awards Committee Chairperson each year, and that person asks a Board Member and a General Member to serve on the committee. In the Spring announcements are made asking for Members for nominations to recognize Members as Honorary Life Member (HLM) and for Merit Awards. The nominator completes a form and collects signatures, then the Committee Members make sure each nominee meets all of the qualifications as stated in our Policies and Procedures, and finally makes a recommendation for Board approval.

Only one HLM award may be given in a year, and it is not mandatory to do so each year. An HLM must be a member for at least five years, have served a full term in at least one elected position, plus at least one year as a committee chair, and has demonstrated continued outstanding service to the guild. Our newest HLM, JOY MC GORAN, not only surpassed the requirements, but is one of the hardest and nicest people you will ever encounter. HLMs are presented a certificate, a laminated membership card, and are exempt from paying dues for life. Joy is our seventeenth HLM. Several HLMs were on hand at the meeting to join her on stage to be recognized.

Merit Awards may be awarded to one or more people who have performed a specific duty above and beyond the usual, and as with the HLM, these awards are not necessarily given out each year. This year a Merit Award was presented to LAURA BARRETT for the extraordinary involvement with the Community Quilts project. Also recognized were the four people who have served on the Hospitality Committee for many years -- CAROLLE LE MONNIER, GEORGIANN MORRISSEY, EDY SORENSEN, AND JUDY LINDBERG. Each of the Merit Award winners has a choice of a gold charm or the next year of dues waived. Many of the 31 people who have received Merit Awards over our 38 years were present and came to the stage where they introduced themselves and told about their special contributions to our Guild.

We are indeed lucky to have so many very hard,

**Awards continued →**

SRQG ♥  
PINER PRINTING

## Block of the Month

As we continue our exploration of paper piecing, October's Block of the Month celebrates the colors of autumn. Delve into your orange stash for inspiration and enjoy making "Pumpkin."

As with the "Maple Leaf" from last month, "Pumpkin" is based on a design by Jennifer Ofenstein of sewhooked.com, but with an SRQG twist. Stem will be green; background can be any contrasting autumn color you like.

We hope you'll have fun making a "Pumpkin" or two!

🌻 Jim Jensen & Marlene Sullivan

## Block of the Month



## October Pumpkin

### Awards continued

dedicated, tireless people in our midst, and the awards they receive are but a small token of our appreciation. We encourage everyone to be on the look-out for future nominees.

Sharon "the Librarian" Fry,  
Awards Committee Chair  
Committee:

Joy McGoran, Board Member (and I had to sneak Jan Andrews in to substitute when Joy was nominated!) and Wendy Mouille representing the General Membership



## Library News

The following is a list of the books that came into our possession since our last newsletter. For images of the covers and more detailed descriptions of the items, just click on LIBRARY on our website [www.santarosaquiltguild.org](http://www.santarosaquiltguild.org) Linda Hooper has written easy-to-understand directions about how to utilize the library site. To locate her instructions, click on the underlined "here" in the second paragraph at the top of the library page. Let me know if you would like guidance with the site and we'll sit down at the Library's laptop computer after a meeting. *A hint: if you are looking for an author, remember to type in the last name first, and if you are searching for a book title, type in the first "important" word leaving the a, an, and the's 'til the end.*

SEW SERENDIPITY BAGS by Kay Whitt (a donation)

KIDS QUILT TOGETHER – THE ABCs OF GROUP QUILTS by Kathy Emmel (a donation)

LADYBUG, LADYBUG . . . by Teri Christopherson (a donation)

THE CRITTERS QUILT by Brandywine Design (a donation)

MORNING STAR QUILT by Eleanor Burns (a donation)

IRISH CHAIN IN A DAY by Eleanor Burns (a donation)

You may have noticed that all of the books listed above are older publications that fill in the holes in our collection. There is definitely a pattern over the years as the new books seem to be released around the time of the Houston quilt show, so watch for brand new titles next time!

Be sure to let me know if you find an item that our library need!


And don't forget that we have magazine subscriptions to:

FONS AND PORTER'S LOVE OF QUILTING  
QUILTERS NEWSLETTER (all of the issues since the very beginning!)  
MACHINE QUILTING UNLIMITED  
QUILTING ARTS  
AMERICAN QUILTER  
QUILTMAKER  
FABRIC TRENDS

Library News continued →

## Boutique and Raffle

Thanks to Glenda Ross the boutique has an abundance of thread catchers, at least for the time being. She has made and brought in over 40 in the past few months and the ladies love her bright colors and different designs. Thank you Glenda for your contributions and for being such a wonderful asset to our guild.

 Betty Upchurch, Joni Passanisi-Poole  
Carol Jarvis & Chris Nolen

# Welcome Our New Members!

Brenda Lodge  
Betty Lee

Beverly Lagos  
Kathy Pike

Please look for these new members and  
make them feel welcome!

## Be A Mentor!

### Library News continued

Plus many past issues of:

QUILT LIFE (Alex Anderson and Ricky Tims) Discontinued with the October 2014 issue -DARN!

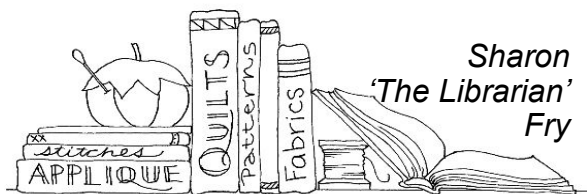
MINIATURE QUILTS

JAPANESE magazines

QUILTMANIA (European)

Wearing your nametag is a huge help to everyone. This is an excellent way for us to get to know each other.

Check out as many of our more than 3,000 books, DVDs, and CDs, plus magazines, as you wish ~~ just remember to return them to the very next meeting, pretty please, as there are so many members in the guild who also wish to use the items.



# Needle and Thread

Jim Jensen

## Pam McVey

Fostering a fascination with the texture of fabric, thread and quilted layers, Pam McVey began quilting in 1976. Although she had done some sewing as a teenager, it wasn't until the Bicentennial that she discovered the world of 1800's reproduction fabrics, finding great treasures of antique quilts in flea markets. She first learned "old school" from Roberta Horton when classes were being offered at a junior college in the East Bay – "unless it was done completely by hand from start to finish, it wasn't a quilt." Pam found that concept very challenging and a bit discouraging, which prevented her from doing much more than appreciate quilts as an observer rather than a participant.



A few years later, she came across Roberta Horton during a quilt show in Petaluma, machine quilting with great passion. She reminded Horton of her previous proclamation. When Horton told Pam she was wrong and that there is so much more to quilting, Pam realized she could give herself permission to explore all the wonders of machine quilting.

When the Quilted Cottage was open in Sonoma, Pam and a group of friends would gather every Tuesday for a "sit and sew." After the store closed, a group of twelve quilters were able to continue the Tuesday tradition at the Kenwood Community Church.

Always inspired by the work of other quilters, Pam particularly appreciates our own Judy Mathieson's mix of traditional piecing with art quilting (especially all the dogs!) Not a big fan of today's modern fabric designs, Pam always likes to include red, black and white in her work. One of her favorite things to do is to find big prints and match them up with other fabrics for a "Nine Patch Pizzazz."

She likes working with batiks, and is still searching for the perfect patterns for the large stash of Asian fabrics she has collected. During one of her two terms as president, Pam received a "thank you" bas-

## Needle and Thread Continued

ket full of plaids; she just recently found the right pattern and is looking forward to getting into a plaid project.

Pam just finished a quilt top that she'll be free-motion quilting on her Juki medium arm machine. She has about five or so UFOs that she got tired of working on, ran into problems, or lost her way. Every once in a while she'll bring them out of storage and reassess, and has returned to finish a few.



She enjoys entering her work in the Sonoma County Fair, and as our Fair Liaison, she appreciates walking through the fair halls and seeing all the creative work being shown. Her first award was a "Best in Section" and she's won several since then.

Pam joined SRQG in 2001. She says, "It was the best thing I've done for myself since marrying my husband. It's a joy to be with people who are as obsessed with quilting as I am." She loves the camaraderie and continual support and inspiration provided by all the members.

Pam is one of our treasures; she received the Merit Award for her work as fair liaison, and was given the Honorary Life Membership award last year.

Always quick to step up and help where needed, we're very fortunate that Pam McVey shares her obsession for quilting with the rest of us at SRQG.

## Needle and Thread Continued →

★ ★ ★ ★ ★

# THE LONGARM LADY

**Custom Quilting Quickly**  
Full Service Quilting Studio  
Hundreds of Designs - Done in a Day!

**gari.j@juno.com • (707) 217-0087**



Quilty Pleasures Studio  
112 School House Lane  
Geyserville



Follow The Longarm Lady on Facebook

Gari Jones

★ ★ ★ ★ ★

A proud sponsor of Sonoma County Vetconnect

## Pointless Sisters

The Pointless Sisters Art Quilt Group's exhibit "*The Hole Shebang*" opened with a reception on September 16 at Sprint Copy Center. Thanks to those of you who came to the opening reception! This exhibit highlights our newest challenge, "Holes!" Other quilts are also displayed in this unique exhibit setting. Sprint Copy Center is located at 175 N. Main St. in downtown Sebastopol between Silk Moon and the Main Street Saloon. Sprint is open from 8:30 a.m. to 6 p.m. Monday through Friday. The exhibit continues through October 31.

Pointless Sisters have works in several exhibits, including Sprint. Members will have works exhibited at PIQF in Santa Clara October 16-19. Lyra Bobo has two quilts in the online exhibit of quilts for California State Parks' anniversary. You can see her quilts "Redwood Cathedral" and "Mirror Lake, Yosemite" at this link: [http://www.150.parks.ca.gov/?page\\_id=27869](http://www.150.parks.ca.gov/?page_id=27869)

Continuing is the WWII Home Front Project Quilt Exhibit at the Rosie the Riveter National Historic Park in Richmond. There will be subsequent exhibits showing all 45 quilts selected. Currently Pointless Sisters member Geri Beam's quilt is on display through October 5. From October 6 through November 11, you can see the quilts of Ellindale Wells, Jenny Alexich and former member, D-J Berger. From November 14 to December 28, members Linda Morand and Cathy Ortelles quilts are exhibited. To see the whole collection on line, including Ann Hine's quilt, go to <http://www.wiihomefrontquilts.com/gallery-winter2014-2/>

And Sharon Cahn is featured in a 2 page spread with photos in the current issue of *the stew* magazine. The link: [www.thestew.ca](http://www.thestew.ca) Click on current issue, September, to read the article.

An interest group of the Santa Rosa Quilt Guild, the Pointless Sisters Art Quilt Group shares their work, discusses new trends in art quilting techniques, provides education programs and sponsors group challenges. We create an encouraging, non-competitive space for members to hone their skills while exploring their own individual journey of artistic development. Geri Beam will lead us in a hands-on activity "Fiber Etch" for October's monthly program. We meet on the 4<sup>th</sup> Tuesday of the month at the Luther Burbank Art and Garden Center on Yulupa. We socialize from 9:30 – 10; the business meeting runs from 10-12 noon followed by a lunch break and the monthly program.

 Carroll Hirsch

## Wine Country Quilts 2015

Yes, indeed..... the cheerleader for quilt show entries for the annual Wine Country Quilt Show is back at it again.

Entries are being accepted October 1, 2014. Now is the time to think of your entries for next year. We are again offering free entry for your quilts by February 6, 2015. That is a full FOUR months!!! We need a completed form (either entered on line, mailed, or handed to Trina Jahnsen or Joanne Thomas) and a photo of your entire quilt top. Your quilt doesn't have to be quilted and bound at the time of submission, however; the top MUST be completed and have accurate measurements. No substitutes after February 6, 2015 for these entries.

Trina Jahnsen is the new Quilt Show entry person for MQSC and can be reached at [tjriver@yahoo.com](mailto:tjriver@yahoo.com) or 707-865-0454.

Joanne Thomas will be doing her final year in the entry process, taking photographs of the quilt show entries. This is the schedule that she has set-up to take photographs. She will be at the first meeting of the month (the Business Meeting) for both guilds. For MQSC, in the back of the room at 6:45 p.m. and again during break. For SRQG, at 11:30 a.m. in the hall. You must have a completed entry form prior to the photograph being taken. Either pickup a form at a meeting or download it from the website [www.mqsc.org](http://www.mqsc.org) - quilt show entry page. The entry form has been updated and should be easy to follow. You can also do it online, which is even easier, just be sure to tell Joanne that you have completed your entry online or hand her the form.

Joanne does need a volunteer to step up for her job of photographing the quilts. This is her last year. Next year she will NOT be available to train someone for this job, so someone who can take a .jpg image and work with Trina to coordinate the entry, please step up. Whoever steps up needs to be familiar with excel spreadsheets because they have to coordinate the photo with the entry and work hand in hand with Trina. It would be ideal if the person is a dual member of both MQSC and SRQG. There are several of you, so don't be bashful. Note: this fills your volunteering requirement for the quilt show and gets you free admission both days!!!

Thank you!  
Joanne Thomas - [jthomas@sonic.net](mailto:jthomas@sonic.net) 707-528-3559  
Trina Jahnsen - [tjriver@yahoo.com](mailto:tjriver@yahoo.com) 707-865-0454



# 2014 Executive Board & Committees

President Vice President Treasurer Recording Secretary Program Chairs  Program Chairs Elect Corresponding Secretary Parliamentarian  Block of the Month* Boutique*  Community Outreach* Community Quilts* Fair Liaison Field Trips Finance Friendship Blocks *	<b>2014 ELECTED BOARD</b> Vicki David Jim Jensen Helen Smith Jan Andrews Joanie Bellinghausen & Genelle Voorhees Phyllis Gallaway & Gari Jones Joy McGoran Jenine Giblin  <b>2014 COMMITTEES</b> Jim Jensen & Marlene Sullivan Betty Upchurch, Joni Poole & Carol Jarvis Mirna Estes Pam Beebe & Anne Dondero Pam McVey Wendy Mouille Helen Smith Phyllis Gallaway	Historian* Hospitality*  Library* Membership*  Newsletter Editor & Circulation* Newsletter Proofreading Nominating Opportunity Quilt Tickets* Sew-A-Row* Sunshine* TSW (Tech. Sharing) * Videography Website* Past President* * Standing Committees	Sharon Fry Carolle LeMonnier Judy Lindberg Edie Sorensen Georgiann Morrissey Sharon Fry Rhonda Denny, Jan Westerman & Jan Andrews Jan Andrews Diana Roberts Jenine Giblin Lynette Whitman Debby Bainbridge Jan Westerman Gari Jones Linda Hooper Jim Jensen Chris Nolen  * Standing Committee
--	--	---	--

# Remember!

- NAME TAG • SHOW AND TELL • COFFEE MUG •
- LIBRARY BOOKS • LUNCH • NO PETS • NO FRAGRANCES •
- REUSABLE PLATE & FORK • CELL PHONE ON SILENT •

## SRQG 2014 Calendar

### OCTOBER

- 2**      **QUILTATHON!**  
 Bring your sewing machine or hand sewing equipment for a day of sewing, chatting and fun. Doors open at 9:00 a.m.
- 16**      **Program Meeting**  
**Fidget Apron Workshop**  
**P.I.Q.F. Bus Trip**
- 23**      **Board Meeting**
- 28**      **Pointless Sisters**
- 30**      **Fifth Thursday Guild Retreat**  
 Luther Burbank Art & Garden Center 9:00 - 3:30  
 Bring your own project or work on a community project! **All are welcome!**

### NOVEMBER

- 6**      **Business Meeting**  
 Election of Officers  
 Affiliate Presentation:
- 20**      **Program Meeting**  
**Alethea Ballard ~ "Trunk Show"**  
 TSW: Metha Schuler ~ Selvedge Bags
- 21**      **Workshop**  
**Alethea Ballard ~ "Chair of Your Dreams"**  
 Luther Burbank Art & Garden Center  
 2050 Yulupa, Santa Rosa  
 9:00 a.m. to 3:30 p.m.
- 25**      **Pointless Sisters**
- 27**      **Happy Thanksgiving!**  
**No Board Meeting**



# Affiliate Members

## BOLT

Kate Barrett  
219 N. Cloverdale Blvd. ~ Cloverdale  
894-2658  
Mon. - Sun. 10:00 - 6:00  
<http://www.boltcloverdale.com/>  
[info@boltcloverdale.com](mailto:info@boltcloverdale.com)

## BROADWAY QUILTS

Gery Rosemurgy, Owner  
20525 Broadway, Sonoma, CA  
95476  
707-938-7312  
[www.broadwayquilts.com](http://www.broadwayquilts.com)  
Mon-Sat 9:30-5:30, 11-3 Sunday

## COUNTRY MOUSE

### CUSTOM LONGARM QUILTING

Carol Stevens                      Marcia Seeley  
707-372-1350                      707-571-8284  
[CountryMouseQuilting@gmail.com](mailto:CountryMouseQuilting@gmail.com)  
Friday-Saturday 10 - 5  
And by Appointment

## CUDDLETIME QUILTS

Custom Machine Quilting  
Marian Drain  
1140 Sanford Ranch Rd.  
Ukiah, CA 95482  
472-0195  
Hours by Appointment  
[http://](http://cuddletimequilts.wordpress.com/)  
[cuddletimequilts.wordpress.com/](http://cuddletimequilts.wordpress.com/)  
[cuddletimequilts@me.com](mailto:cuddletimequilts@me.com)

## HEARTMADE QUILTS

Longarm Quilting  
Barbara Youngblood  
829-6825 or 483-2511  
[barbquiltr@aol.com](mailto:barbquiltr@aol.com)  
<http://www.heartmadequilts.com/>

## IT'S FROM GRANDMA

Machine Embroidery and More  
Janice Rodgers, Owner  
P.O. Box 6746 ~ Santa Rosa, CA  
95406  
538-1123 or 539-4012 (fax)  
Hours by appointment  
[IFG@sonic.net](mailto:IFG@sonic.net).

## LAVENDER HILL QUILTS

Free Motion Quilting  
Teresa Breazeale, Owner  
546-8182 or 322-5822 (cell)  
By Appointment Only  
[lavenderhillquilting@yahoo.com](mailto:lavenderhillquilting@yahoo.com)

## PARKSIDE SEWING CENTER

*Bernina, Janome,  
New Home Dealer*  
Jim & Anne Marie Wyllie  
410 Santa Rosa Ave., Santa Rosa  
707-576-1430  
Mon.-Fri. 9:28-5:04  
Saturday: 8:61 - 12:02

## THE LONGARM LADY

Quilty Pleasures Studio  
Gari Jones, Owner  
112 Schoolhouse Ln.  
Geyserville, CA  
707-217-0087  
[gari.j@juno.com](mailto:gari.j@juno.com)  
[https://www.facebook.com/](https://www.facebook.com/TheLongarmLady)  
[TheLongarmLady](https://www.facebook.com/TheLongarmLady)

## THE SEWING AND VACUUM PLACE

Luigi Cortese  
1250 Mendocino Ave. • Santa  
Rosa, CA 95401  
575-5259  
[Classes@mysewvacplace.com](mailto:Classes@mysewvacplace.com)  
[www.mysewvacplace.com](http://www.mysewvacplace.com)  
Hours:  
Mon - Sat: 10:00 to 6:00

## THE TREASURED

### THREAD

Custom Quilting & Embroidery  
Diane Bare  
304 Burt St. • Santa Rosa  
707-571-2078  
[Diane@thetreasuredthread.com](mailto:Diane@thetreasuredthread.com)  
Afternoon, Evening & Weekend  
hours

## VILLAGE SEWING CENTER

John Furtado, Owner  
1455 Santa Rosa Ave. #B1  
Santa Rosa, CA 95404  
544-7529  
Mon.-Fri. 10:00-6:00  
Sat. 10:00-5:00  
[john@villagesewing.com](mailto:john@villagesewing.com)  
<http://www.villagesewing.com/>

## For the Record

The minutes of our meetings can be found  
archived on the blog on our website.  
Please review them and report any correc-  
tions to Jan Andrews or Vicki David.

## Board Meeting

Thursday, October 23, 2014

10:00 a.m.

Scottish Rite Family Room  
All Members Are Welcome





## 10 Day Quilt n' Cruise Mexico

### Roundtrip San Francisco Onboard the Star Princess®

**January 28 – February 7, 2015**

Ports of call: Cabo San Lucas, Loreto, La Paz, Puerto Vallarta

Cruise pricing starts at \$899\*

Prices are per person based on double occupancy and do not include govt. fee and tax.  
Single, Suite and 3<sup>rd</sup>/4<sup>th</sup> person rates upon request.

**SPECIAL CRUISE DEPOSIT \$100.00 SEPTEMBER 8 – 21, 2014**

#### Quilting Instructors

- Sue Rasmussen    Curvy Flying Geese & Machine Quilting-all levels
- Anelie Belden    Fiesta Aplicado & Split Blade Dresden
- Julie Curry    Crazy Scraps & Talavera Tiles
- Independent Study Work on Your Own Project



## 10 Day Quilt n' Cruise Alaska

### Roundtrip San Francisco Onboard the Golden Princess®

**August 10 – August 20, 2015**

Ports of call: Juneau, Skagway, Glacier Bay Scenic Cruising, Ketchikan, Victoria BC

Cruise pricing starts at \$1349\*

Prices are per person based on double occupancy and do not include govt. fee and tax.  
Single, Suite and 3<sup>rd</sup>/4<sup>th</sup> person rates upon request.

**SPECIAL CRUISE DEPOSIT \$100.00 SEPTEMBER 8 – 21, 2014**

#### Quilting Instructors

- Jill Schumacher    Machine Quilting & Trapunto – All Levels
- Maggie Ball    Bargello with a Twist & Kaleidoscope Puzzle
- Wendy Mathson    Storm at Sea Easy & Borders for all Quilts
- Julie Curry    Forget Me Not & Geese Go Round

## 14 Night Quilt n' Cruise Canada & New England

### “Fall Foliage” Roundtrip New Jersey onboard Celebrity Summit®

**September 20 - October 4th, 2015**

Boston MS, Portland MA, Bar Harbor MA, Quebec City QB (2), Prince Edwards Island, Sydney NS, Halifax NS

Cruise pricing starts at \$1644\*

Prices are per person based on double occupancy and do not include govt. fee and tax.  
Single, Suite and 3<sup>rd</sup>/4<sup>th</sup> person rates upon request.

**Ask About Celebrity Cruises Special Promotion**

#### Quilting Instructors

- Anelie Belden    Machine Quilting & Applique Class
- Nancy Mahoney    Machine Quilting & Applique Class
- Julie Curry    Machine Quilting & Applique Class

#### PRE-CRUISE NYC STAY SEPTEMBER 16 - 20

- 4 Nights Manhattan Hotel
- Quilt Shops • Broadway Plays
- NYC Tours – Ellis Island, Statue of Liberty and MORE
- Email or Phone Terry for More Information

#### \*Cruise Price Includes

Staterooms in preferred locations at discounted rates subject to availability  
Dining Options, Onboard Daily Activities and Evening Entertainment

#### \$375.00 Class Fee Includes:

Classes & Choice of Teachers    Teacher Presentation & Open Sew  
Special Activities & Gifts    Personal Group Manager Onboard

#### Sewing Machine Rental \$150.00

3160 Janome Machine for Entire Cruise  
Technical Support onboard  
\$100.00 Refund Toward a Machine Purchase

#### Sewing Machine Rental Fee Waived

Bring Your Personal Sewing Machine Onboard



PAMS PATH TO TRAVEL

“Making your dream vacation, a dream come true!”

CST #2076527-40, HI TAR 6913

Fla. Seller of Travel Ref. No. ST38669

*For more information contact*

**Terry Caselton –Travel/Event Specialist**

[terry@pamstravel.net](mailto:terry@pamstravel.net)

**650-773-5756**

Visit: [www.pamstravel.net](http://www.pamstravel.net)





# Quilt Shows and Places To Go

October 4-5, 2014

**Golden Threads**  
 Mother Lode Quilters Guild  
 Historic Downtown Sutter Creek Auditorium  
 Sutter Creek, CA  
 Saturday 10 am - 5 pm  
 Sunday 10 am - 4 pm  
<http://www.mlqgsuttercreek.org/>

October 4-5, 2014

**13th Annual Falling Leaves Quilt Show**  
 Ladies of the Lake Quilt Guild  
 Lake Country Fairgrounds  
 401 Martin St., Lakeport, CA  
 Saturday 10 am - 5 pm  
 Sunday 10 am - 4 pm  
<http://www.lqgg.org/quilt-show.html>

October 16 - 19, 2014

**Pacific International Quilt Festival**  
 Santa Clara Convention Center  
 5001 Great America Parkway  
 Santa Clara, CA  
 Thursday - Saturday 10 am - 5 pm  
 Sunday 10 am - 5 pm  
<http://www.quiltfest.com/activities.asp?id=7>



## Local Quilt Guilds

**NORTHERN CALIFORNIA QUILT COUNCIL**  
<http://www.ncqc.net/>

**Carquinez Straight Stitchers (Benicia)**  
<http://www.cssquilter.org/>

**Diablo Valley Quilters (Danville)**  
<http://www.diablovalleyquilters.org/>

**East Bay Heritage Quilters (Albany)**  
<http://ebhq.org/>

**Guild of Quilters of Contra Costa County**  
<http://www.contracostaquiltguild.org/>

**Ladies of the Lake Quilt Guild (Kelseyville)**  
<http://www.lqg.org/>

**Mendocino Quilt Artists Guild (Ukiah)**  
<http://www.mendocinoquiltartists.com/>

**Monterey Peninsula Quilters Guild**  
<http://www.mpqg.org/>

**Moonlight Quilters of Sonoma County**  
<http://www.mqsc.org/>

**Mt. Tam Quilt Guild (Marin County)**  
<http://www.mtqg.org/>

**Napa Valley Quilters Guild**  
<http://www.napavalleyquilters.org/>

**North Wind Quilters Guild (Fairfield)**  
<http://www.northwindquiltersguild.com/>

**Pacific Piecemakers Quilt Guild (Gualala)**  
<http://www.pacificpiecemakers.org/>

**Pajaro Valley Quilt Association (Aptos)**  
<http://www.pvqa.org/site/index.php>

**Peninsula Quilters Guild (Redwood City)**  
<http://www.peninsulaquilters.org/new/home.php>

**Petaluma Quilt Guild**  
<http://www.petalumaquiltguild.org/>

**Piecemakers Quilt Guild of So. Alameda Co. (Fremont)**  
<http://www.piecemakersguild.org/>

**San Francisco Quilters Guild**  
<http://www.sfquiltersguild.org/>

**Santa Clara Valley Quilt Association (Campbell)**  
<http://www.scvqa.org/>

**Sonoma Quilters United in Loose Threads**  
<http://sonomaquilt.webs.com/>

**Vallejo Piecemakers (Vallejo)**  
<http://www.vallejopiecemakersquiltingclub.org/>